



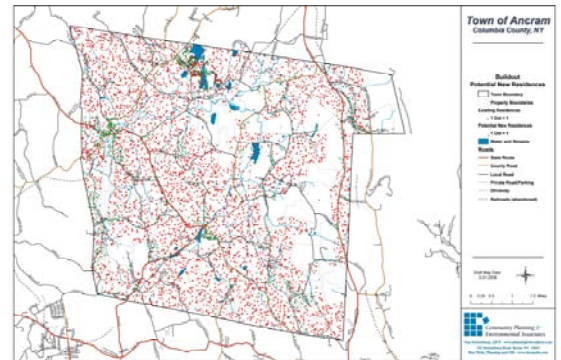
Community Planning and Environmental Associates

Points of Interest

- CP & EA has 15 years of experience in planning.
- We are specialists in helping small and rural communities plan for their future.
- CP&EA has produced several state and national award-winning plans.
- Staff are all Certified Planners from the American Institute of Certified Planners. Principal Planner Nan Stolzenburg is also a Certified Wildlife Biologist and a Certified Environmental Planner.
- Our GIS program includes innovative GIS planning applications such as buildout analysis, erosion modeling, constraints and opportunities analysis, and land prioritization.

About Community Planning & Environmental Associates

Community Planning & Environmental Associates (CP&EA) was founded in 1992 to provide specialized professional consulting and planning services to New York State's local communities. CP&EA has extensive experience with comprehensive land use planning and environmental management for municipalities, organizations and individuals in the areas of: land use planning, zoning and land use regulation development; visioning workshops; geographic information systems and analysis; environmental impact assessments; community involvement campaigns; and grant writing. We have extensive experience with small and rural communities.



CP&EA is a land use and environmental planning consulting group with offices located in Schoharie County. In addition to our planning services, we offer a full-service team of associated professionals that provide specialty services in the areas of hydrogeology, environmental engineering, traffic engineering, economic development and land use law. A wealth of professional experiences has provided our firm with the right combination of technical skills and the ability to work with people of all walks of life. Our approach is to customize a technical team of experts to meet the specific needs of your community. Our team will only include those professionals needed for the specific project. In that way, we can provide our services in a cost-effective manner.

We assist communities in revitalization strategies and economic development planning. CP&EA provides Towns with specific planning and community development tools designed to work in rural areas. CP&EA is uniquely situated to help understand the positive and negative impacts of growth, the planning tools available, and the revitalization options these local municipalities can take advantage of.



Community Planning & Environmental Associates (CP&EA) was founded in 1992 to provide specialized professional consulting services in areas of small and rural community planning. CP&EA has extensive experience with land use planning, agriculture and farmland protection, and environmental management for municipalities, organizations and individuals.

Our firm has contributed to a variety of projects with services such as comprehensive planning, development of zoning and other land use regulations, development of farmland protection strategies, environmental impact assessments, community involvement campaigns and grant writing. CP&EA concentrates in the special planning and environmental needs of small communities and rural areas. CP&EA is an independent consulting group located in rural Schoharie County, 25 miles southwest of Albany. A wealth of professional experiences ranging from assisting local governments develop a comprehensive plan to watershed management have provided CP&E Associates with the right combination of technical skills and the ability to work with people of all walks of life.

CP&EA includes a team of professionals that provide specialty services in the areas of planning, geographic information systems, hydrogeology, environmental engineering, traffic engineering, and land use law.

CP&EA maintains liability insurance and is a New York State Certified Woman-Owned Business. When requested, clients will be provided with a Certificate of Insurance when contracting for specific services.



PROJECT EXPERIENCE SUMMARY

Planning

- Comprehensive plan development
- Agriculture, open space, farmland protection
- Rural planning techniques for economic development, Main Streets and rural highways, open space protection, and affordable housing
- Development of land use regulations
- Municipal land use law
- Grant writing

Data Collection and Public Participation

- Development of maps and GIS databases
- Demographic data collection and analysis
- Community involvement and visioning strategies
- Community surveys and Community Image Surveys
- Inventory of natural and cultural resources within the community

Environmental Planning

- Environmental Assessment
- Natural resources management, including watershed and wildlife management
- Development of Environmental Impact Statements and Generic EIS
- Project Site Master Planning and Review
- Evaluation of site plan reviews

Community Planning & Environmental Associates Client List

► Comprehensive PLANS AND STRATEGIC PLANS COMPLETED

Town of Harpersfield, Delaware Co.	Town of Rensselaerville, Albany County
Town of Colchester, Delaware County	Town of Gallatin, Columbia County
Town of Tompkins, Delaware County	Town of Broadalbin, Fulton County
Town/Village of Seneca Falls, Seneca Co.	Town of Cairo, Greene County
Town/Village of Athens, Greene County	Town of Peru, Clinton County
Town/Village of Schoharie	Town of Halcott, Greene County
Town of Victor, Oneida County	Town of Princetown, Schenectady Co.
Town of Chatham, Columbia County	Town of Providence, Saratoga County
Village of Whitesboro, Oneida County	Town of Pine Plains, Dutchess County
Village of Cobleskill, Schoharie County	Town of Springfield, Otsego County
Village of Kinderhook, Columbia Co.	Town of New Lebanon, Columbia County
Village of Sharon Springs, Schoharie Co.	Town of Chatham, Columbia County
Village of Altamont, Albany Co.	Town of Pittstown, Rensselaer County
Town of Ausable, Clinton County	Town of Schaghticoke, Rensselaer Co.
Town of Ghent, Columbia County	Town of Kinderhook, Columbia County
Town of Galway, Saratoga Co.	Town of Gallatin, Columbia County
Town of Stockport, Columbia County	Town of Durham, Greene County
Town of Jewett, Green County	Lewis County
Town of White Creek, Washington County	Town of Hamilton, Madison County
Town of Middletown, Delaware County	Town/Village of Middleburgh, Schoharie Co.
Town of Stamford, Delaware County	Town of Berne, Albany County
Town of Ancram, Columbia County	Town of Claverack, Columbia County
Town of Copake, Columbia County	Town of Minden, Montgomery County
Town of Roxbury, Delaware County	Town of Butternuts, Otsego County
Town of Springfield, Otsego County	Town of Meredith, Delaware County
Town of Nassau, Rensselaer County	Village of Voorheesville, Albany County
Town of Hunter, Greene County	Town of Waterford, Saratoga County
Village of Stamford, Delaware County	Town of North East

Towns of Middletown, Roxbury, Andes, Olive—ESOPUS/Delaware LWRP/Revitalization Strategy, Delaware County

Empire State Development Corporation (SEQRA Workbooks for new SEAF and FEAF)

Community Planning & Environmental Associates Client List

► Agriculture and Farmland Protection Plans

Herkimer County (County-wide Plan)

Putnam County (County-wide Plan)

Sullivan County (County-wide Plan)

Jefferson County (County-wide Plan)

Schoharie County (County-wide)

Otsego County (County-wide Plan)

Dutchess County (County-wide Plan)

Orange County (County-wide Plan)

Washington County (County-wide Plan)

Town of Chatham, Columbia County

Town of Halcott, Greene County

Town of Bethel, Sullivan County

Town of Liberty, Sullivan County

Town of Delaware, Sullivan County

Town of Callicoon, Sullivan County

Town of Berne, Albany County

Town of Granville, Washington County

Town of Ancram, Columbia County

Town of White Creek, Washington County

Development Regulations, Design Standards, Adoption of Regulations, SEQR

Town of Pine Plains, Dutchess County

Town of New Lebanon, Columbia County

Town of Stockport, Columbia County

Town of Halcott, Greene County

Town of Cairo, Greene County

Town of Middlefield, Otsego County

Town of Berne, Albany County

Village of Kinderhook, Columbia County

Town of Kinderhook, Columbia County

Town of Ancram, Columbia County

Town of Springfield, Otsego County

Town of Cherry Valley, Otsego County

Town of Sharon, Schoharie County

Village of Cobleskill, Schoharie County

Village of Schoharie, Schoharie County

Village of Altamont, Albany County

Town of Athens, Greene County

Village of Athens, Greene County

Town of Peru, Clinton County

Town of Elizabethtown, Essex County

Town of AuSable, Clinton County

Town of Minden, Montgomery County

Village of Sharon Springs, Schoharie County

Town of Otsego, Otsego County

Town of Meredith, Delaware County

Town of Ballston, Saratoga County

Town of Harpersfield, Delaware County

Town of Ballston, Saratoga County

Town of Waterford, Saratoga County

Village of Athens, Greene County

Town of Ghent, Columbia County

Town of White Creek, Washington County

Town of Ghent, Columbia County

Village of Stamford, Delaware County

Town of Chatham

Town of Hamilton, Madison County

Other SEQR Related Experience

Nan Stolzenburg was the principal author for New York State Department of Environmental Conservation's SEQR Workbooks – two companion guides to the new SEAF and FEAF forms (see <http://www.dec.ny.gov/permits/6191.html>). These workbooks received the 2014 Planning Excellence Award for Best Practice from the American Planning Association, Upstate New York Chapter.

She has also been a frequently invited panelist, professional speaker, and trainer on various SEQR, environmental and planning topics for:

New York Planning Federation
 Upstate New York Chapter of American Planning Association
 American Farmland Trust
 Albany Law School
 Capital District Regional Planning Commission
 Columbia Land Conservancy
 Tug Hill Commission
 Resource Conservation Districts (RC&D)
 Catskill Community Resource Day
 Dutchess County Planning Federation
 Schoharie County
 Madison County
 Otsego County
 Broome County

Multiple towns and villages that hire CP&EA to conduct their mandatory 4 hour trainings for Planning Board and ZBA members.

Contact Information for CP&EA

Nan Stolzenburg, AICP
 Owner and Principal Planner
 152 Stolzenburg Road
 Berne, NY 12023
 518-872-9753
 518-872-0679 (Fax)
nan@planningbetterplaces.com