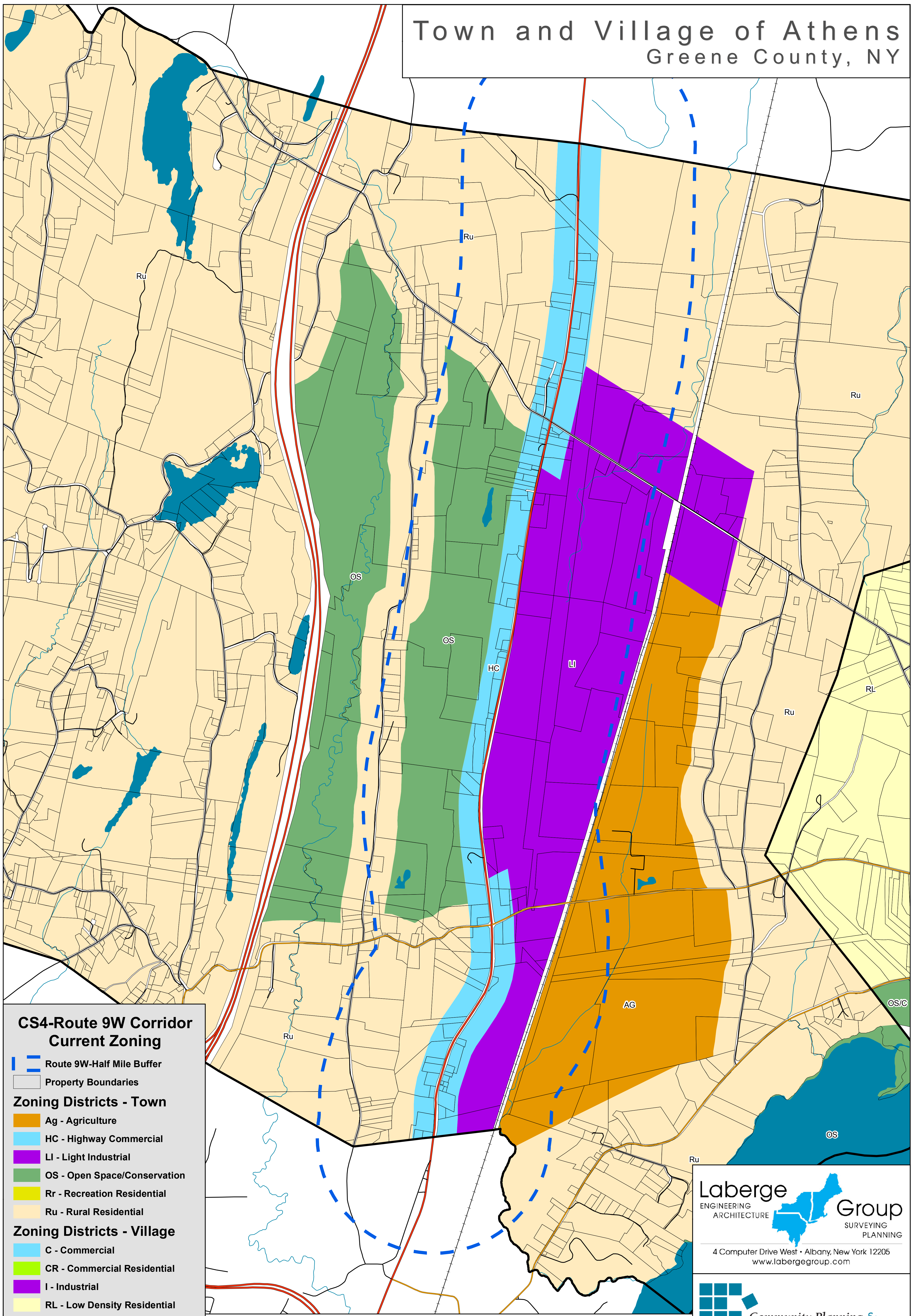


# Town and Village of Athens Greene County, NY



## CS4-Route 9W Corridor Current Zoning

-  Route 9W-Half Mile Buffer
-  Property Boundaries
- Zoning Districts - Town**
-  Ag - Agriculture
-  HC - Highway Commercial
-  LI - Light Industrial
-  OS - Open Space/Conservation
-  Rr - Recreation Residential
-  Ru - Rural Residential
- Zoning Districts - Village**
-  C - Commercial
-  CR - Commercial Residential
-  I - Industrial
-  RL - Low Density Residential
-  RM - Medium Density Residential
-  OS/C - Open Space Conservation
-  RR - Recreational Residential
-  W - Waterfront

0 0.25 0.5 1 Miles



Draft Map Date  
6-13-2007

**Laberge Group**  
ENGINEERING ARCHITECTURE SURVEYING PLANNING  
4 Computer Drive West • Albany, New York 12205  
[www.labergegroup.com](http://www.labergegroup.com)

**Community Planning & Environmental Associates**  
Nan Stolzenburg, AICP - [www.planningbetterplaces.com](http://www.planningbetterplaces.com)  
152 Stolzenburg Road, Berne, NY 12023  
Don Meltz, Planning and GIS - [www.donmeltz.com](http://www.donmeltz.com)