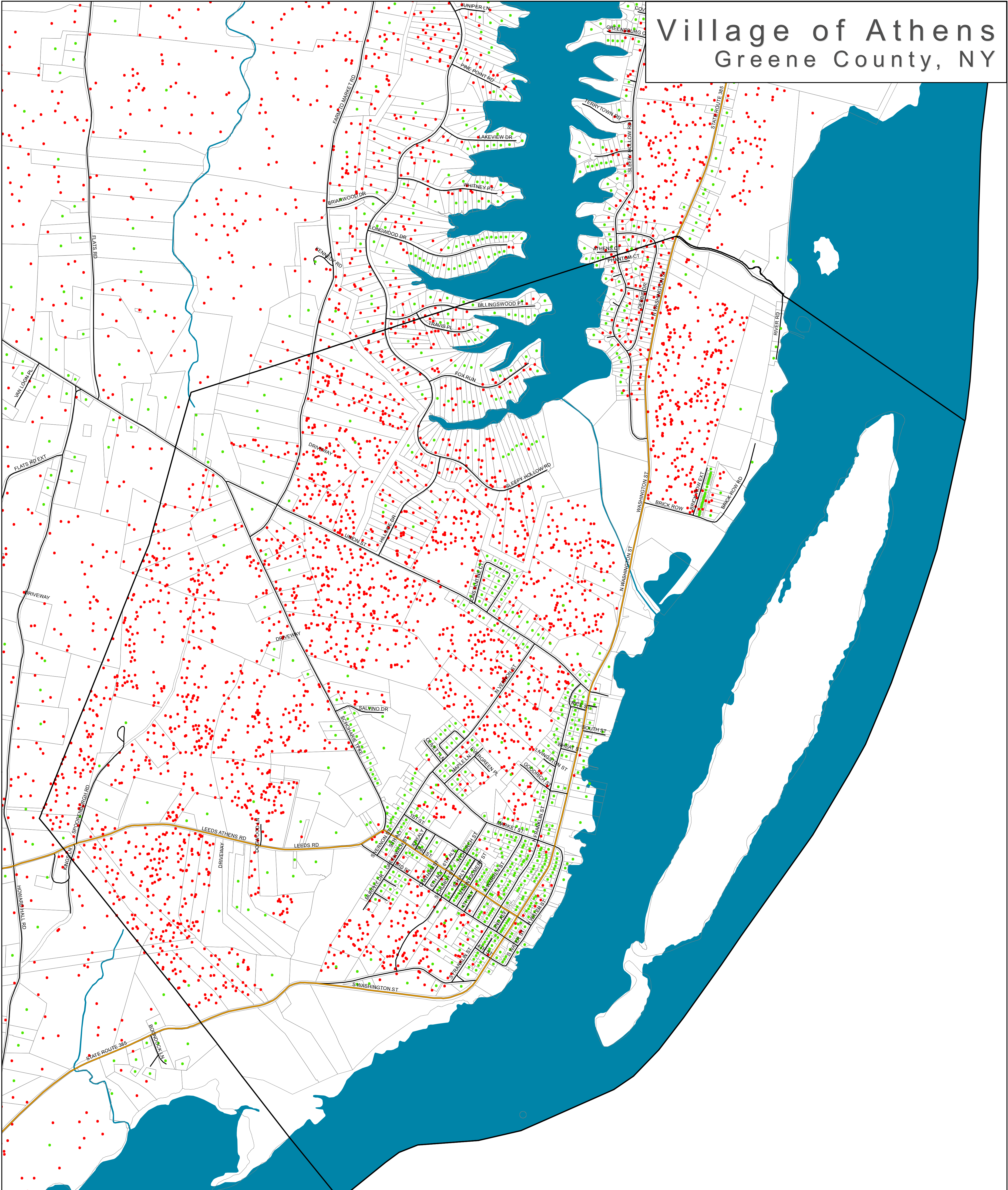


Village of Athens Greene County, NY



BO9b-Buildout Results 2, Village New Residential Uses With Water and Sewer

- Town Boundary
- Village Boundary
- Roads**
- Primary Highway
- Secondary Road-State or County
- Local Road
- Railroads
- Parcels
- Water
- Streams
- Existing Residential Use
- Potential New Residences**
- 1 Dot = 1 Potential New Residence

Laberge Group
ENGINEERING ARCHITECTURE SURVEYING PLANNING

4 Computer Drive West • Albany, New York 12205
www.labergegroup.com

Community Planning & Environmental Associates

Nan Stolzenburg, AICP - www.planningbetterplaces.com
152 Stolzenburg Road, Berne, NY 12023
Don Meltz, Planning and GIS - www.donmeltz.com

