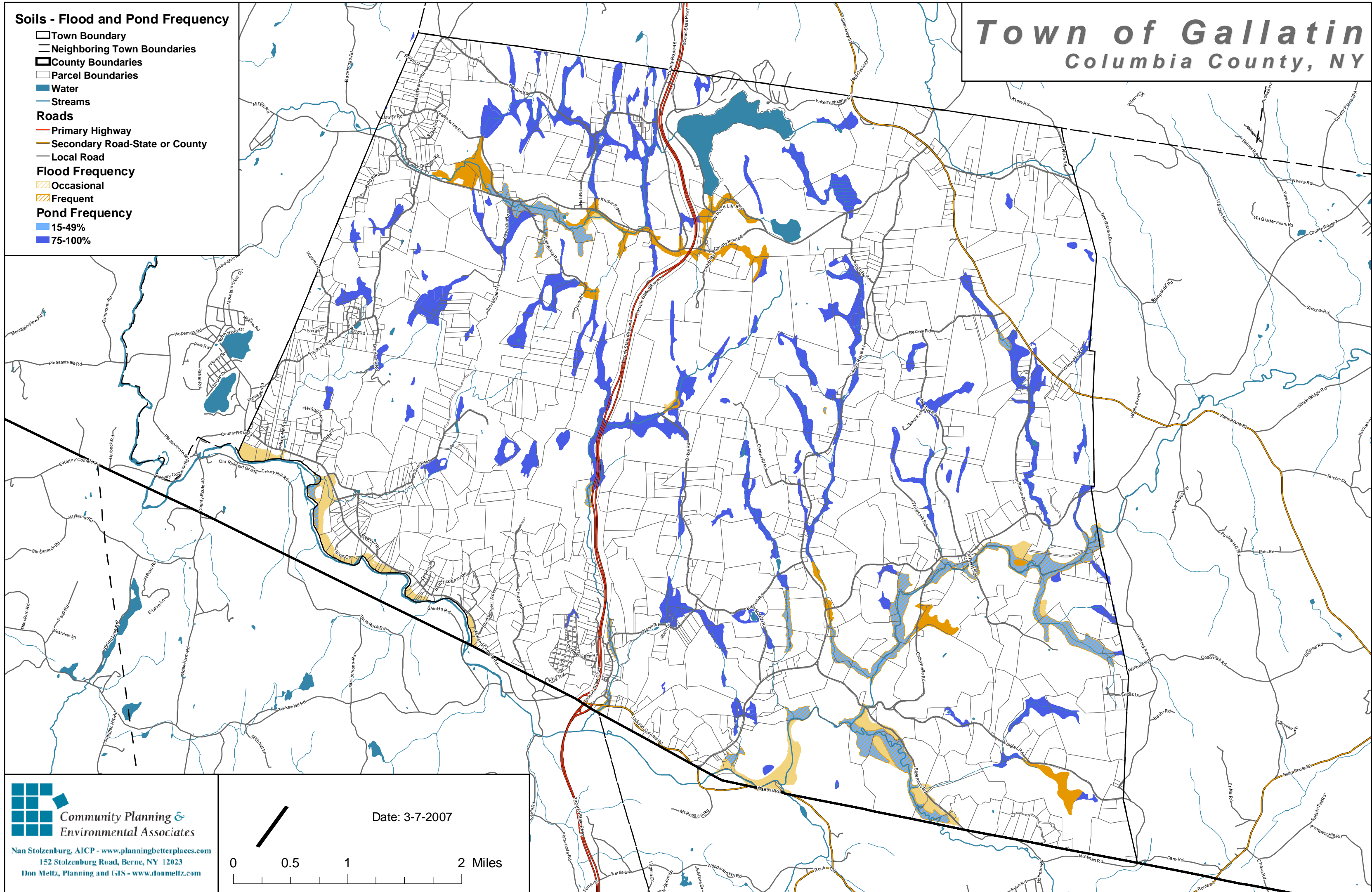


Soils - Flood and Pond Frequency

- Town Boundary
- Neighboring Town Boundaries
- ▭ County Boundaries
- Parcel Boundaries
- Water
- Streams
- Roads**
- Primary Highway
- Secondary Road-State or County
- Local Road
- Flood Frequency**
- ▨ Occasional
- ▨ Frequent
- Pond Frequency**
- 15-49%
- 75-100%

Town of Gallatin

Columbia County, NY



**Community Planning &
Environmental Associates**
Nan Stolzenburg, AICP - www.planningbetterplaces.com
152 Stolzenburg Road, Berne, NY 12023
Don Meltz, Planning and GIS - www.donmeltz.com

Date: 3-7-2007

0 0.5 1 2 Miles