

# Town of Gallatin

## Columbia County, NY

**Surficial Geology**

- Town Boundary
- Neighboring Town Boundaries
- County Boundaries

**Roads**

- Primary Highway
- Secondary Road-State or County
- Local Road

**Surficial Geology**

**Glaciocustrine & Marine: Lake & Marine Deposition**

- Id - Lacustrine delta
- Isc - Lacustrine silt and clay

**Till: Deposition Beneath the Ice**

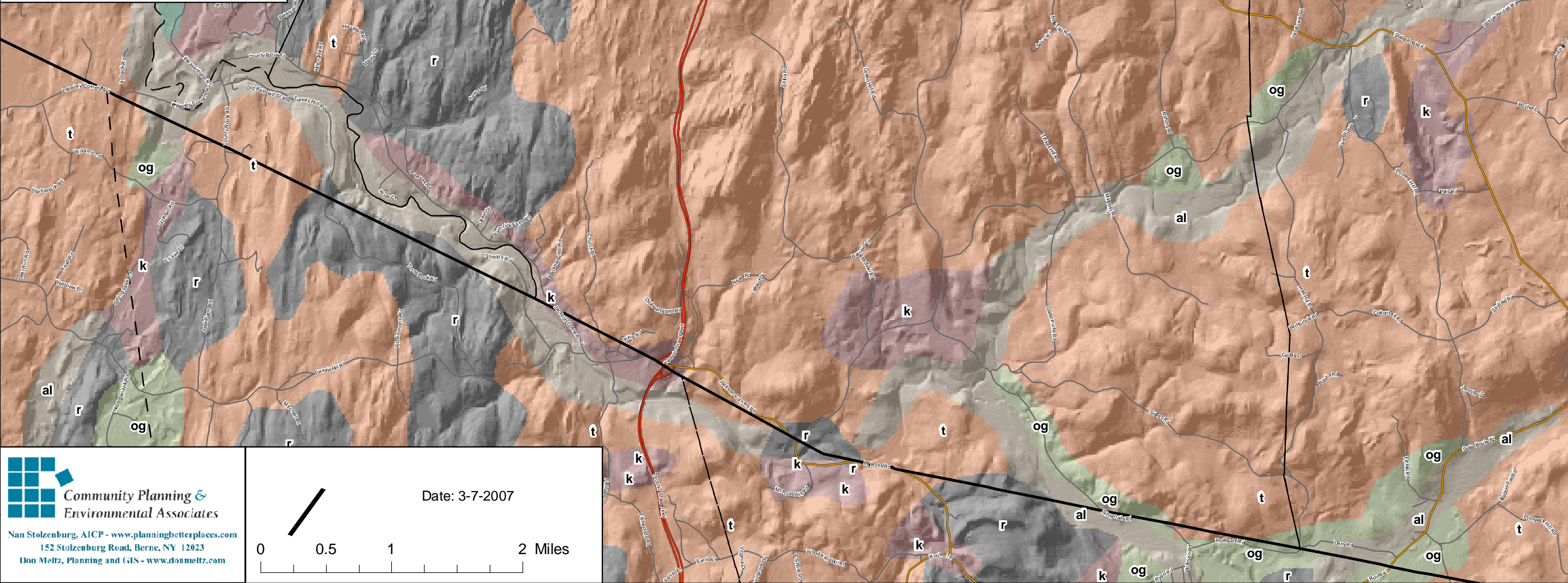
- t - Till Variable texture (boulders to silt), Glaciofluvial: Stream Deposition Adjacent or in Front of the Ice

**Fluvial: Stream Deposition**

- k - Kame deposits
- og - Outwash sand and gravel

**Miscellaneous**

- al - Recent alluvium
- pm - Swamp deposits
- r - Bedrock



 **Community Planning & Environmental Associates**  
 Nan Stolzenburg, AICP - [www.planningbetterplaces.com](http://www.planningbetterplaces.com)  
 152 Stolzenburg Road, Berne, NY 12023  
 Don Meltz, Planning and GIS - [www.donmeltz.com](http://www.donmeltz.com)

