

# Town of Gallatin

## Columbia County, NY

**Bedrock Geology**

- Town Boundary
- Neighboring Town Boundaries
- County Boundaries

**Roads**

- Primary Highway
- Secondary Road-State or County
- Local Road

**Bedrock Geology**

**Taconic Overthrust Sequence**

- Cg - Germantown Formation
- Omi - Mount Merino Formation
- OCe - Elizaville Formation
- Osf - Stuyvesant Falls Formation

**Lorraine, Trenton, Black River Groups**

- On - Normanskill Shale
- Owl - Walloomsac Formation
- Oag - Austin Glen Formation
- Otm - Taconic Melange
- Oba - Balmville Limestone

**Beekmantown, Wappinger, Stockbridge Groups**

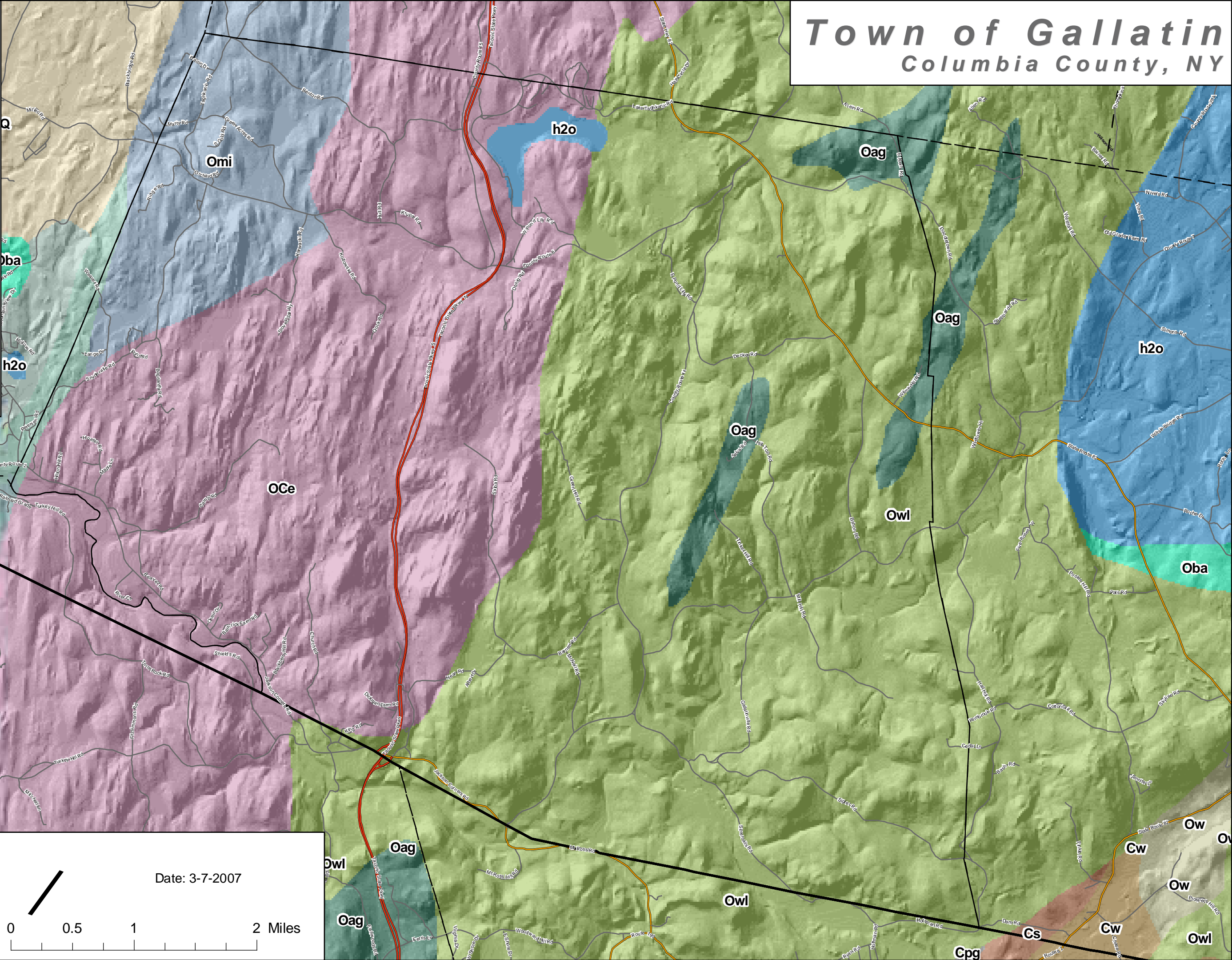
- Cs - Stissing Formation
- Cw - Lower Wappinger Group
- Ow - Upper Wappinger Group

**Glacial and Alluvial Deposits**

- Q - Glacial and Alluvial Deposits

**Water**

- h2o - water



**Community Planning &  
Environmental Associates**

Nan Stolzenburg, AICP - [www.planningbetterplaces.com](http://www.planningbetterplaces.com)  
152 Stolzenburg Road, Berne, NY 12023  
Don Meltz, Planning and GIS - [www.donmeltz.com](http://www.donmeltz.com)

Date: 3-7-2007

0 0.5 1 2 Miles