

Town of Gallatin

Columbia County, NY

Watersheds

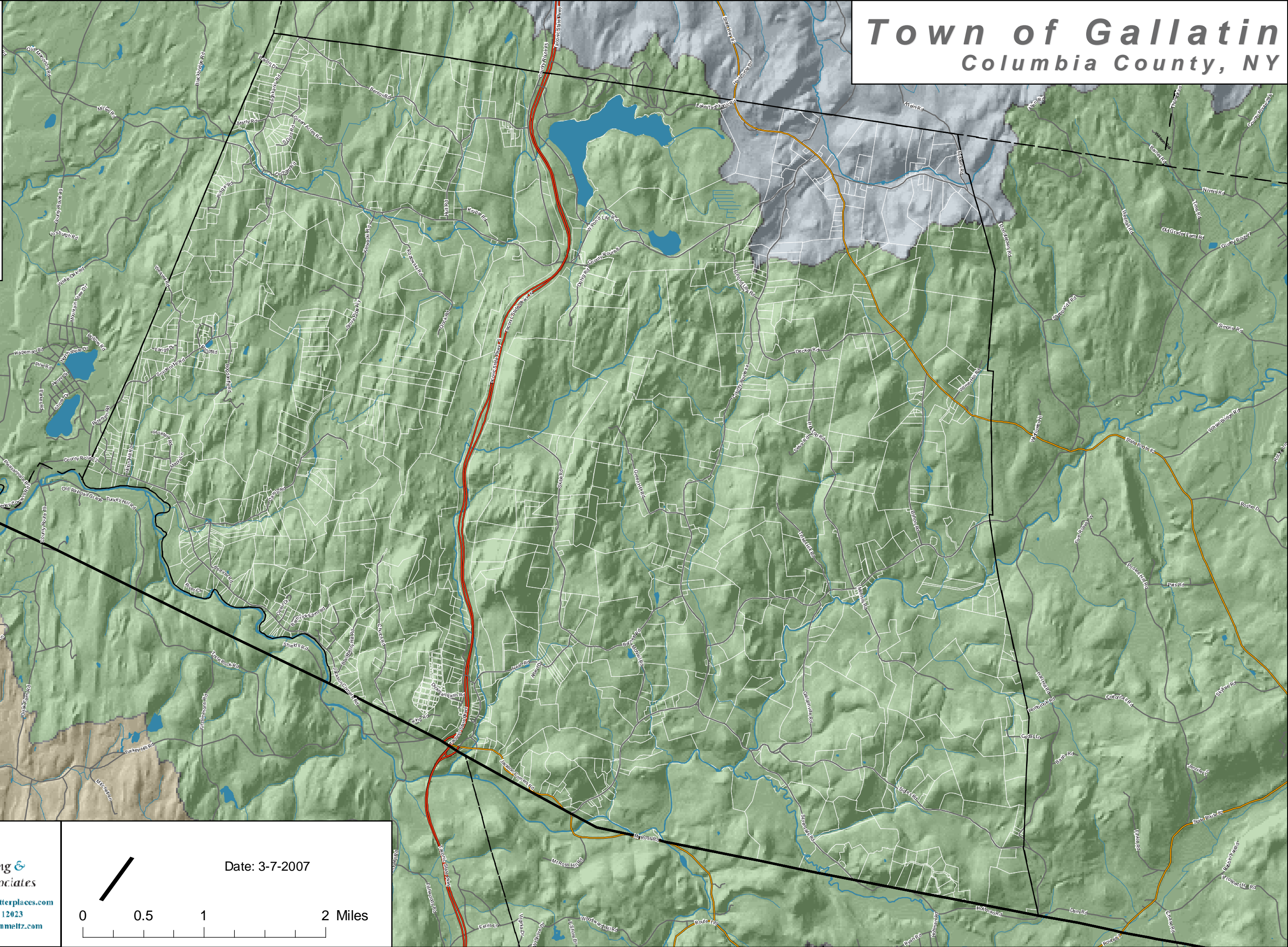
- Town Boundary
- Neighboring Town Boundaries
- County Boundaries
- Parcel Boundaries
- Water
- Streams

Roads

- Primary Highway
- Secondary Road-State or County
- Local Road

Watersheds (11 digit HUC)

- Claverack Creek
- Kinderhook Creek to Jansen Kill
- Jansen Kill to Rhinecliff



Community Planning &
Environmental Associates

Nan Stolzenburg, AICP - www.planningbetterplaces.com
152 Stolzenburg Road, Berne, NY 12023
Don Meltz, Planning and GIS - www.donmeltz.com

Date: 3-7-2007

0 0.5 1 2 Miles