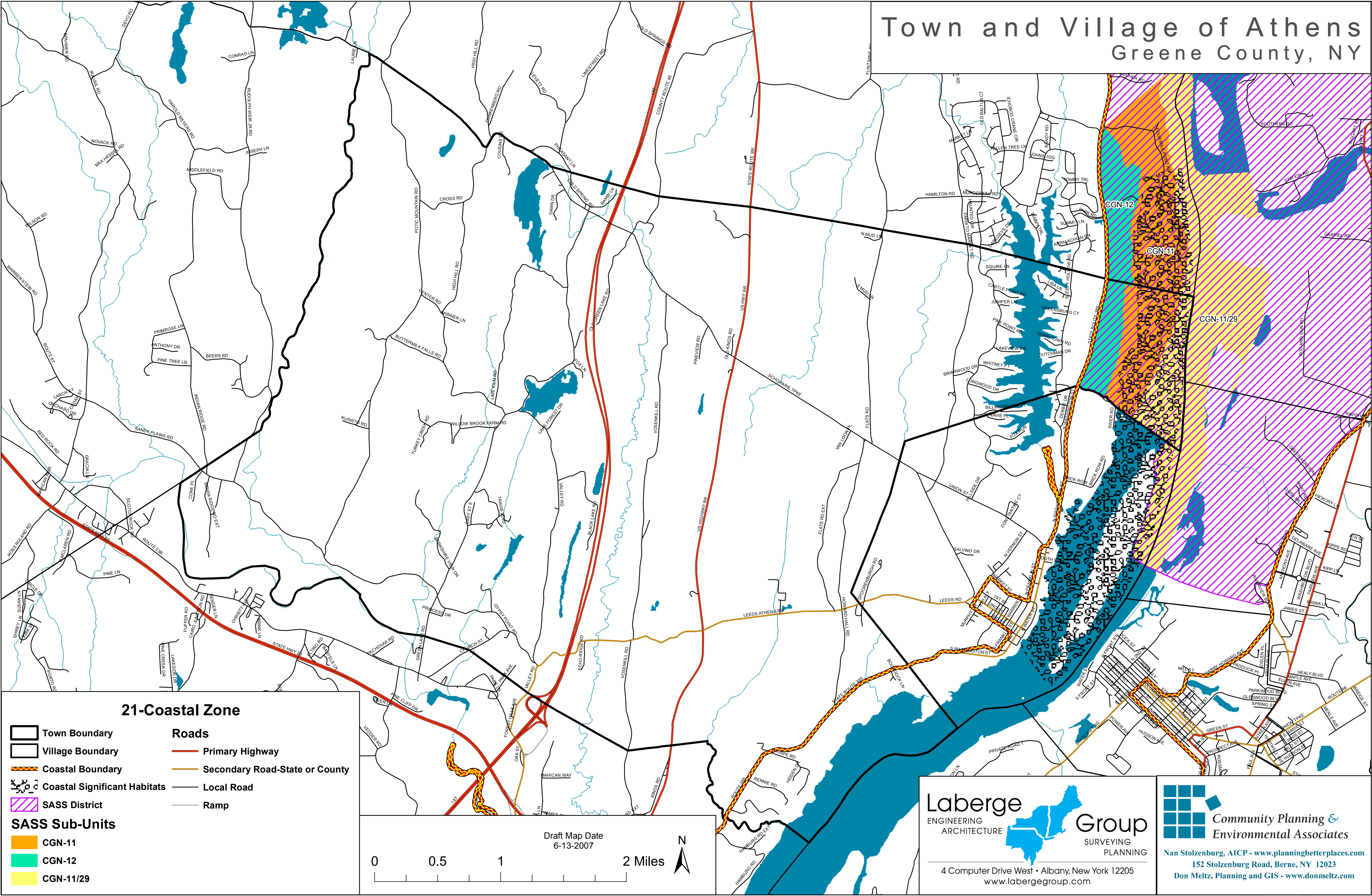
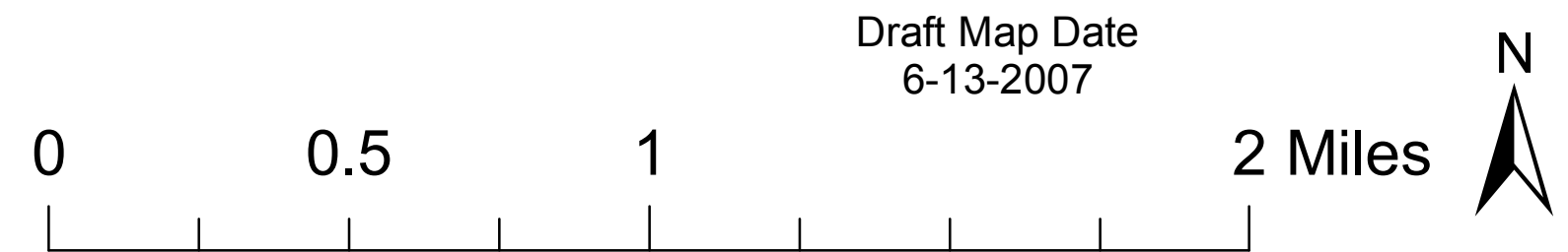


# Town and Village of Athens Greene County, NY



## 21-Coastal Zone

- |                       |                              |  |                                |
|-----------------------|------------------------------|--|--------------------------------|
|                       | Town Boundary                |  | Primary Highway                |
|                       | Village Boundary             |  | Secondary Road-State or County |
|                       | Coastal Boundary             |  | Local Road                     |
|                       | Coastal Significant Habitats |  | Ramp                           |
|                       | SASS District                |  |                                |
| <b>SASS Sub-Units</b> |                              |  |                                |
|                       | CGN-11                       |  |                                |
|                       | CGN-12                       |  |                                |
|                       | CGN-11/29                    |  |                                |



**Laberge**  
ENGINEERING  
ARCHITECTURE

**Group**  
SURVEYING  
PLANNING

4 Computer Drive West • Albany, New York 12205  
www.labergegroup.com

**Community Planning &  
Environmental Associates**

Nan Stollenburg, AICP - [www.planningbetterplaces.com](http://www.planningbetterplaces.com)  
152 Stolzenburg Road, Berne, NY 12023  
Don Meltz, Planning and GIS - [www.donmeltz.com](http://www.donmeltz.com)