

Town of Gallatin

Columbia County, NY

Step Slopes

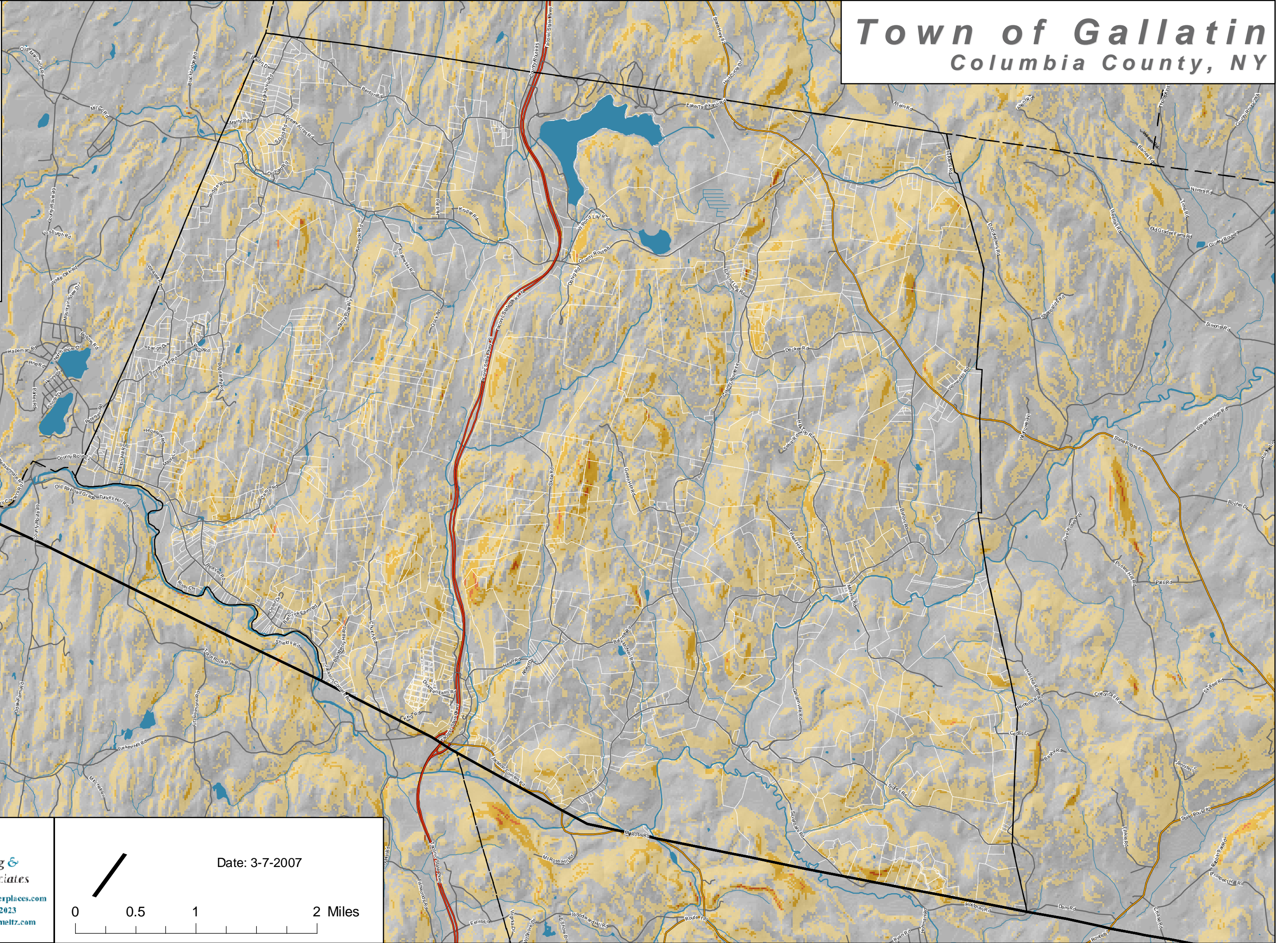
- Town Boundary
- Neighboring Town Boundaries
- County Boundaries
- Parcel Boundaries
- Water
- Streams

Roads

- Primary Highway
- Secondary Road-State or County
- Local Road

Step Slopes

- over 15%
- over 25%
- over 45%



**Community Planning &
Environmental Associates**

Nan Stolzenburg, AICP - www.planningbetterplaces.com
152 Stolzenburg Road, Berne, NY 12023
Don Meltz, Planning and GIS - www.donmeltz.com

Date: 3-7-2007

0 0.5 1 2 Miles