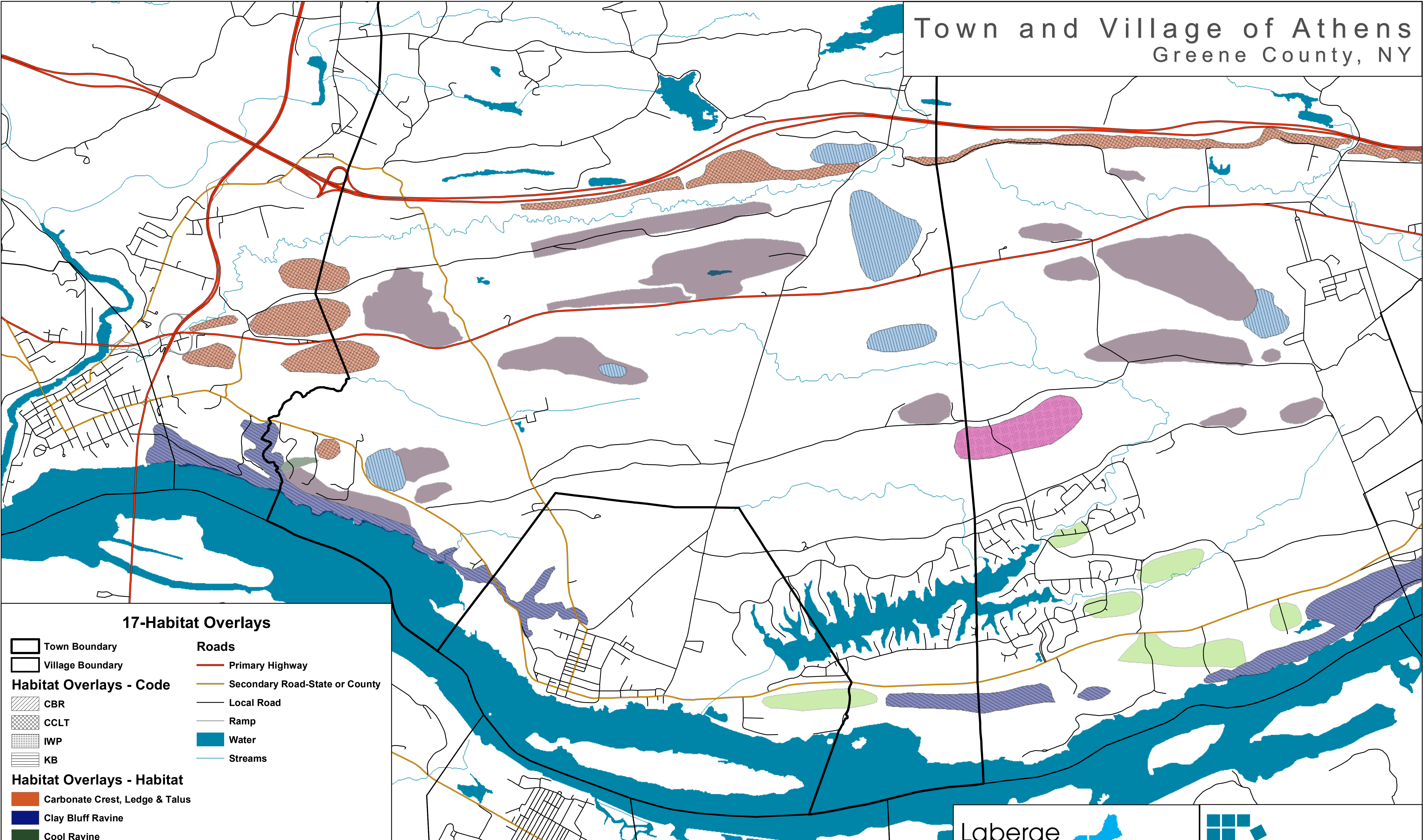


Town and Village of Athens Greene County, NY



17-Habitat Overlays

Town Boundary
Village Boundary

Habitat Overlays - Code

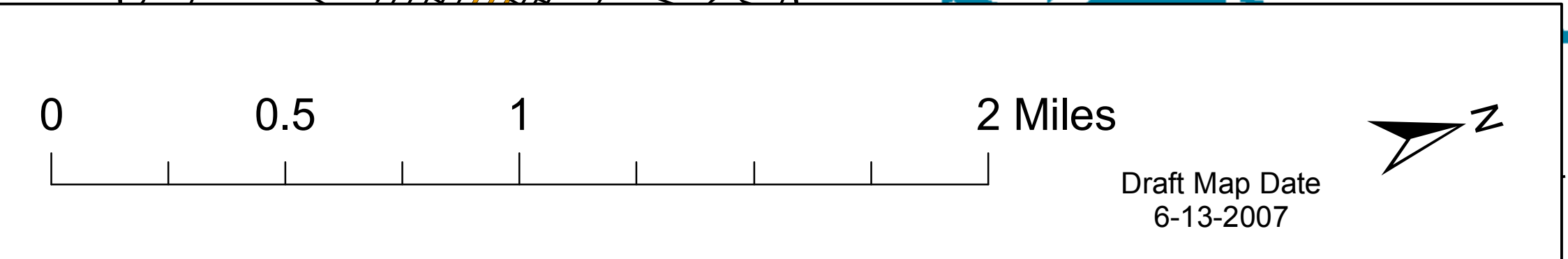
CBR
 CCLT
 IWP
 KB

Habitat Overlays - Habitat

Carbonate Crest, Ledge & Talus
 Clay Bluff Ravine
 Cool Ravine
 Crest, Ledge & Talus
 Intermittent Woodland Pools
 Knoll & Basin
 Springs & Seeps

Roads

Primary Highway
 Secondary Road-State or County
 Local Road
 Ramp
 Water
 Streams



Laberge Group
 ENGINEERING ARCHITECTURE SURVEYING PLANNING

4 Computer Drive West • Albany, New York 12205
 www.labergegroup.com

Community Planning & Environmental Associates

Nan Stolzenburg, AICP - www.planningbetterplaces.com
 152 Stolzenburg Road, Berne, NY 12023
 Don Meltz, Planning and GIS - www.donmeltz.com