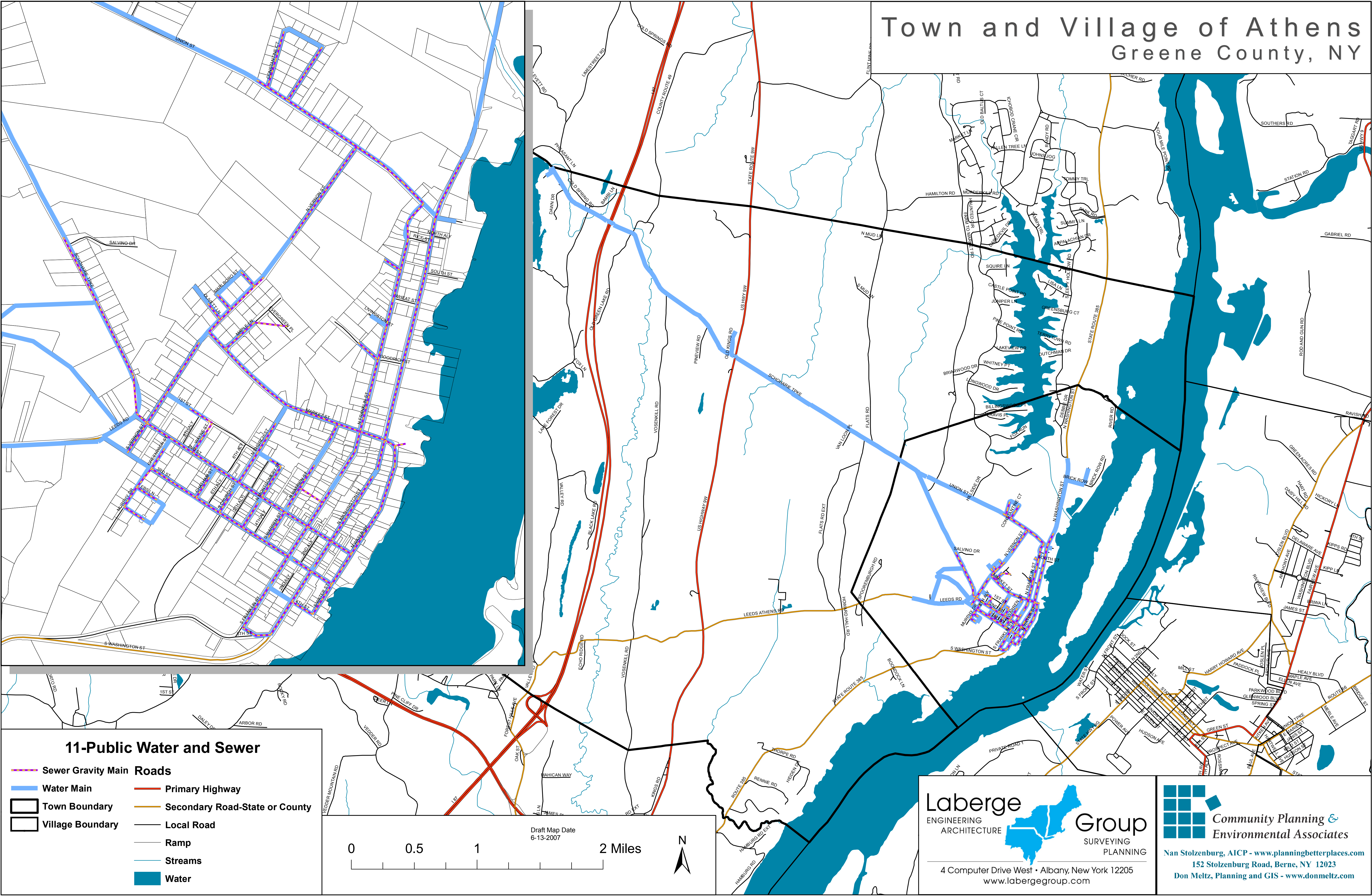
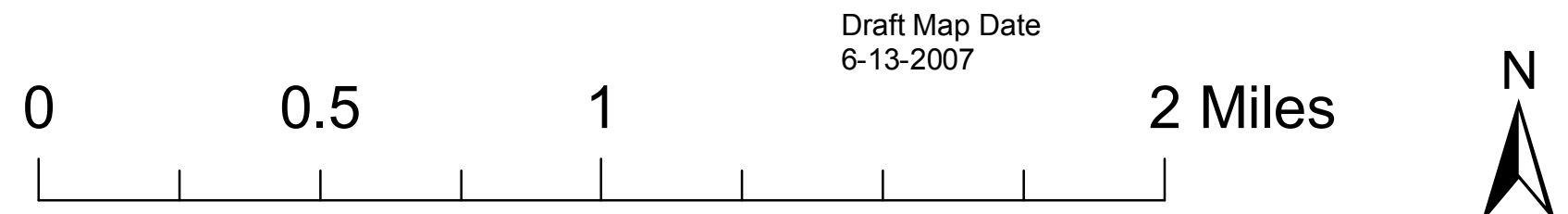


Town and Village of Athens Greene County, NY



11-Public Water and Sewer

- Sewer Gravity Main Roads
- Water Main
- Town Boundary
- Village Boundary
- Primary Highway
- Secondary Road-State or County
- Local Road
- Ramp
- Streams
- Water



Laberge Group
ENGINEERING ARCHITECTURE SURVEYING PLANNING

4 Computer Drive West • Albany, New York 12205
www.labergegroup.com

Community Planning & Environmental Associates

Nan Stolzenburg, AICP - www.planningbetterplaces.com
152 Stolzenburg Road, Berne, NY 12023
Don Meltz, Planning and GIS - www.donmeltz.com