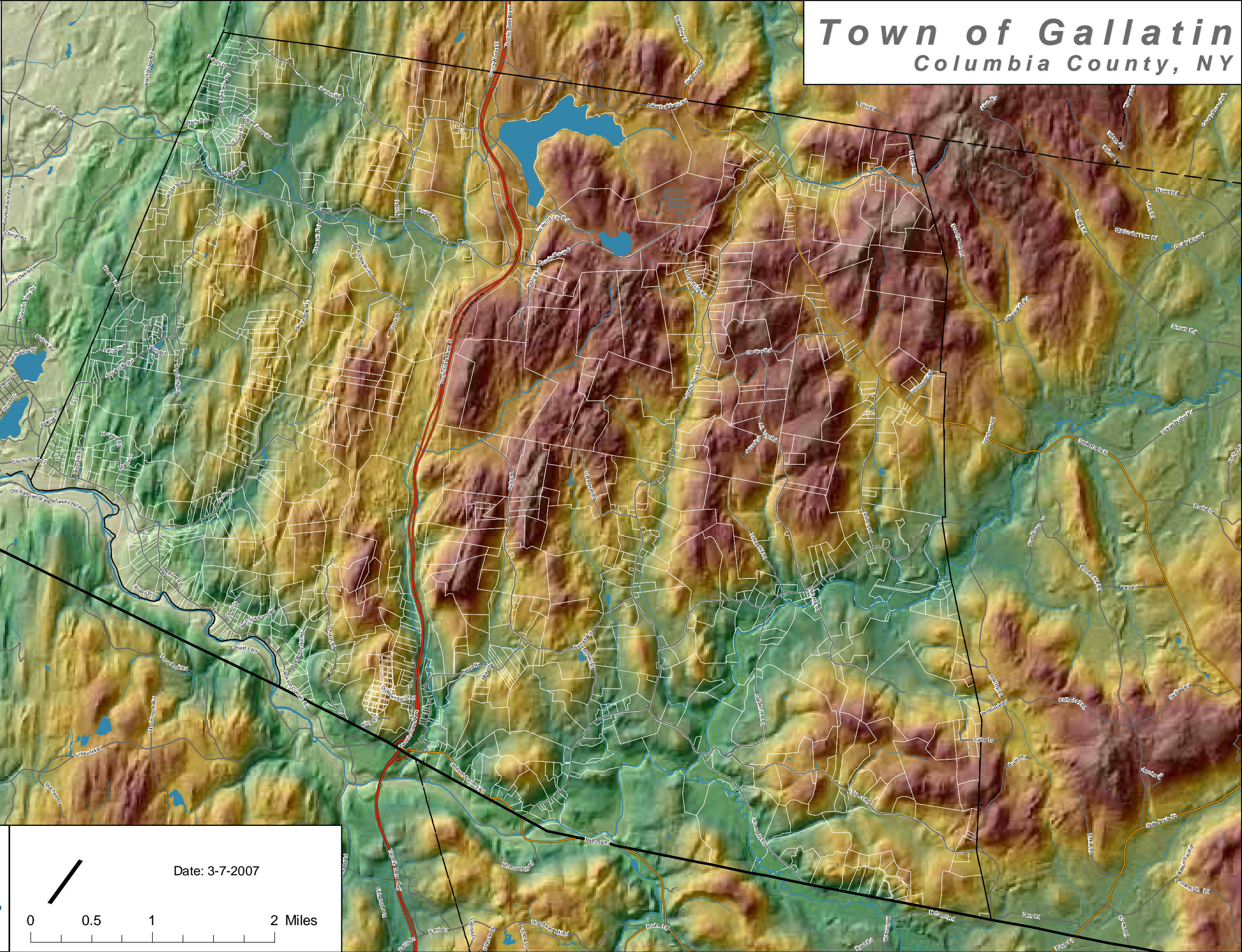


# Town of Gallatin

Columbia County, NY

### Topography

- Town Boundary
- Neighboring Town Boundaries
- County Boundaries
- Parcel Boundaries
- Water
- Streams
- Roads
  - Primary Highway
  - Secondary Road-State or County
  - Local Road
- Elevation
  - High : 428
  - Low : 15



Community Planning &  
Environmental Associates

Nan Stolzenburg, AICP - [www.planningbetterplaces.com](http://www.planningbetterplaces.com)  
152 Stolzenburg Road, Berne, NY 12023  
Don Meltz, Planning and GIS - [www.donmeltz.com](http://www.donmeltz.com)

Date: 3-7-2007

0 0.5 1 2 Miles