

# Town of Berne

## Albany County, NY

### Surficial Geology

#### Surficial Geology

**Till: Deposition Beneath Glacier**

t - Till (boulders to silt)

**Moraine: Sedimentation of Glacier Margin**

km - Kame Moraine

tm - Till Moraine

**Glaciofluvial: Stream Deposition Adjacent to Ice**

k - Kame Deposits

og - Outwash Sand and Gravel

**Glaciocustrine & Marine: Lake & Marine Deposition**

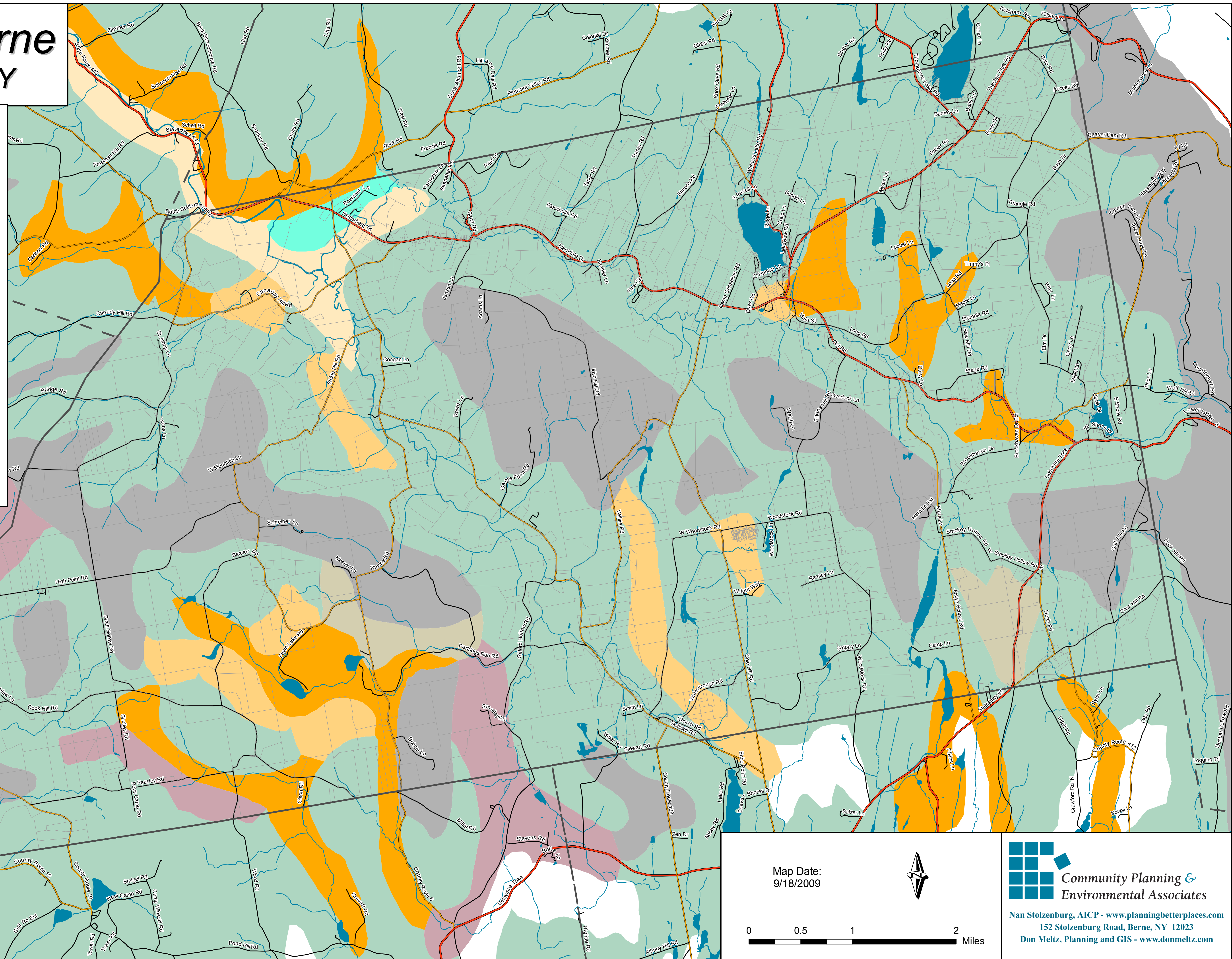
lsc - Lacustrine Silt and Clay

**Fluvial: Stream Deposition**

al - Recent Alluvium

**Bedrock**

r - Bedrock



Map Date:  
9/18/2009



0 0.5 1 2 Miles

 **Community Planning &  
Environmental Associates**

Nan Stolzberg, AICP - [www.planningbetterplaces.com](http://www.planningbetterplaces.com)  
152 Stolzburg Road, Berne, NY 12023  
Don Meltz, Planning and GIS - [www.donmeltz.com](http://www.donmeltz.com)