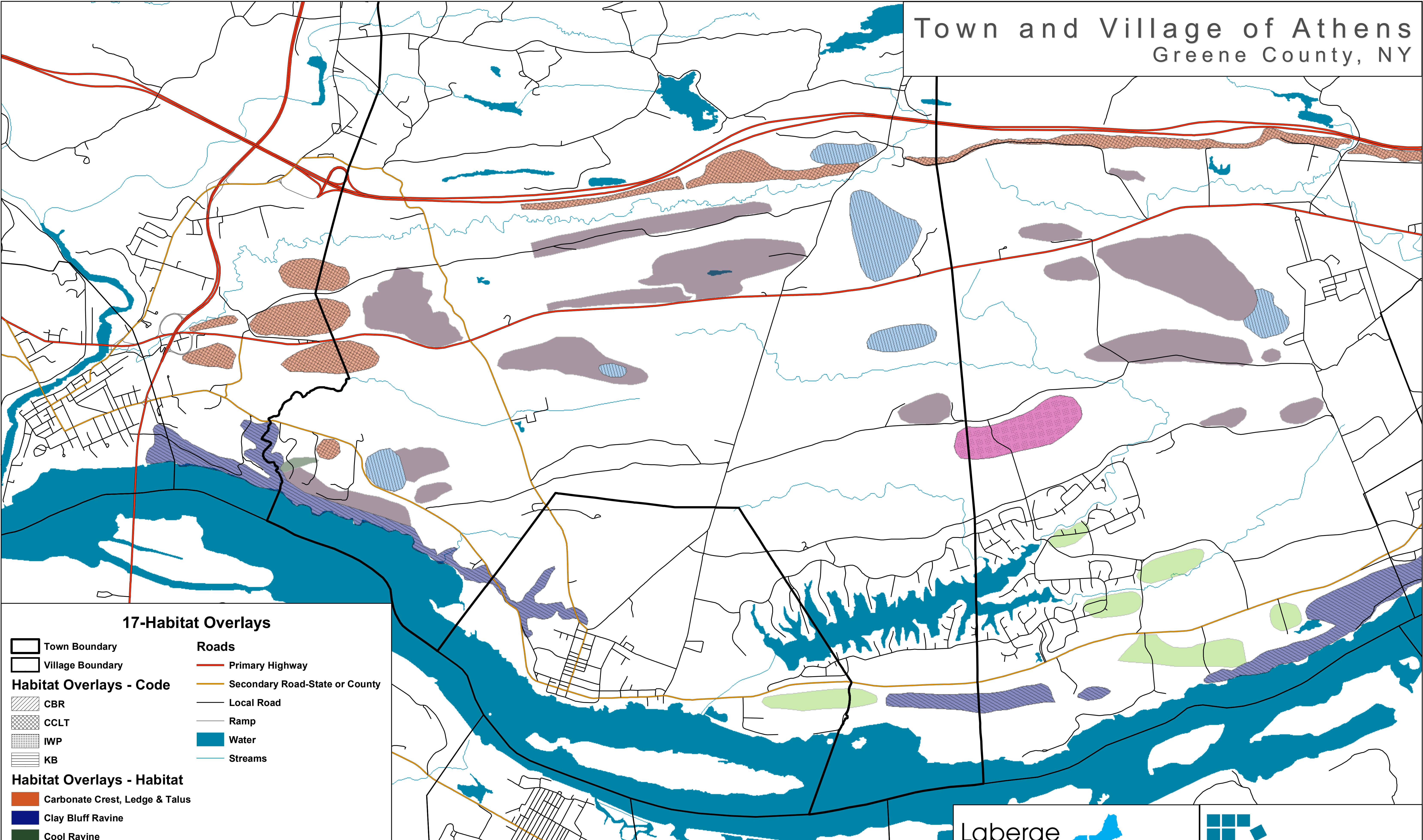


# Town and Village of Athens Greene County, NY



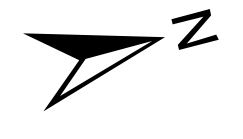
### 17-Habitat Overlays

- |                                |                                |
|--------------------------------|--------------------------------|
| Town Boundary                  | Village Boundary               |
| <b>Habitat Overlays - Code</b> |                                |
| CBR                            | CCLT                           |
| IWP                            | KB                             |
| <b>Roads</b>                   |                                |
| Primary Highway                | Secondary Road-State or County |
| Local Road                     | Ramp                           |
| Water                          | Streams                        |

- Habitat Overlays - Habitat**
- Carbonate Crest, Ledge & Talus
  - Clay Bluff Ravine
  - Cool Ravine
  - Crest, Ledge & Talus
  - Intermittent Woodland Pools
  - Knoll & Basin
  - Springs & Seeps



Draft Map Date  
6-13-2007




**Laberge**  
ENGINEERING  
ARCHITECTURE



**Group**  
SURVEYING  
PLANNING

4 Computer Drive West • Albany, New York 12205  
www.labergegroup.com



**Community Planning &  
Environmental Associates**

Nan Stolzenburg, AICP - [www.planningbetterplaces.com](http://www.planningbetterplaces.com)  
152 Stolzenburg Road, Berne, NY 12023  
Don Meltz, Planning and GIS - [www.donmeltz.com](http://www.donmeltz.com)